



# Daily Technical Trader - Qatar

July 09, 2026



### QE Index Summary

	08 July 2026	07 July 2026	Chg
Index	10,176	10,255	-0.8%
Value QR (mn)	349	325	7.4%
Trades	22,392	20,724	8.0%
Volume (mn)	153	100	53.0%
Stocks Traded	53	53	0.0%
Gainers	9	17	-47.1%
Losers	43	33	30.3%
Unchanged	1	3	-66.7%

Source: Qatar Stock Exchange

### Weekly Market Recommendations:

Time Frame	Trend	Current Level	Target	Support	Resistance
Short-term (05Jul -09Jul)	↓	10,176.15	10,110	10,100	10,500
Medium-term (01Jul- 31Jul)	→	10,176.15	10,000	10,000	10,850

### Weekly Company Recommendations:

Company Name	Current Price	View	Time Frame	Support	Resistance
IGRD	QR4.420	Positive	Short-term (05Jul -09Jul)	QR4.326	QR4.575
QGRI	QR1.799	Positive	Medium-term (01Jul- 31Jul)	QR1.460	QR2.227

### Daily Company Recommendations:

Company Name	Current Price	View	Time Frame	Support	Resistance
QFLS	QR14.08	Positive	1 Day	QR14.00	QR14.19
QNNS	QR10.15	Positive	1 Day	QR10.09	QR10.22
MERS	QR13.31	Positive	1 Day	QR13.22	QR13.42
MHAR	QR2.145	Positive	1 Day	QR2.124	QR2.170

### List of Stocks Close to Technical Levels

Companies Closest to Resistance				
Company	Ticker	Mcap (QRmn)	Price	Resistance
Qatar Fuel Company	QFLS	13,905.8	14.08	14.11
Ezdan Holding Group	ERES	22,868.4	0.850	0.865
Qatar Navigation	QNNS	11,463.9	10.15	10.16
Qatar Insurance Company	QATI	6,519.2	1.989	2.005
Doha Bank	DHBK	8,883.4	2.872	2.889

Companies Closest to Support				
Company	Ticker	Mcap (QRmn)	Price	Support
Barwa Real Estate Company	BRES	9,162.6	2.338	2.332
Mesaieed Petrochemical Holding	MPHC	14,571.4	1.130	1.128
AlRayan Bank	MARK	18,860.4	2.008	2.005
Qatar Insurance Company	QATI	6,519.2	1.989	1.985
Estithmar Holding	IGRD	19,656.9	4.310	4.303

Companies with RSI over 70 (Overbought)				
Company	Ticker	Mcap (QRmn)	Price	RSI
Lesha Bank	QFBQ	3,277.2	2.887	76.11
Qatar General Insurance & Reinsurance Co	QGRI	1,682.0	1.898	73.36
National Leasing	NLCS	365.3	0.718	60.66
Ahli Bank	ABQK	10,334.7	4.020	57.72
Dlala Brokerage & Investments Holding Co	DBIS	266.7	1.330	57.53

Companies with RSI below 30 (Oversold)				
Company	Ticker	Mcap (QRmn)	Price	RSI
Zad Holding Co	ZHCD	3,830.4	13.20	18.70
Industries Qatar	IQCD	66,967.8	11.02	27.75
AlRayan Bank	MARK	18,860.4	2.008	28.80
Qatar Cinema & Film Distribution Co	QCFS	155.6	2.480	31.06
Doha Insurance Co	DOHI	1,410.1	2.827	32.48

Source: Refinitiv, QNBFS Research

### Outlook

The QE Index lost around 78 points to close below the 10,200 level on Wednesday. The RSI line is sliding further down below the 50 level. Key support is now seen near 10,100, while resistance is expected around 10,500.

**QE Index- Technical Charts**

**Daily**



Source: Bloomberg, QNBFS Research

**Weekly**



Source: Bloomberg, QNBFS Research

**Monthly**



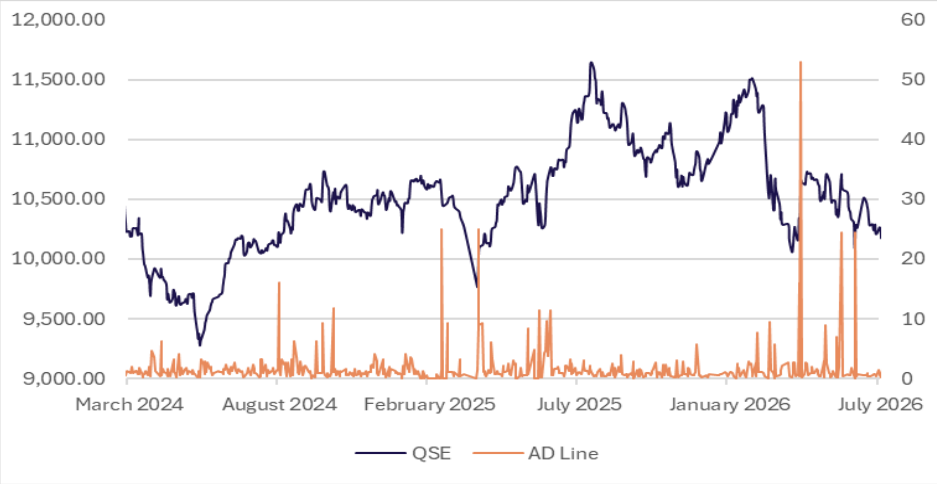
Source: Bloomberg, QNBFS Research

The QE Index continued to slide lower for the second consecutive session on the back of profit-booking. Meanwhile, the Index witnessed selling pressure on fresh escalations of geopolitical tensions and news flow. The Index has immediate strong support near 10,100. However, any sustained weakness below this level, can result in further downside towards 10,000. On the flip side, the Index needs to sustain above 10,210, to rebound towards 10,270.

The QE Index slid lower for the second consecutive week on the back of profit-booking. Meanwhile, the Index has been struggling to cross its 100-WMA currently near 10,655 and 200-WMA currently near 10,615 over the past few weeks. The Index needs to sustain above 10,350, to witness a rebound towards its 200-WMA. Overall current trend remains on the downside, and the Index can possibly move lower towards 10,100, wherein a reversal is expected. However, below 10,100, further profit-booking can test the 9,950 level.

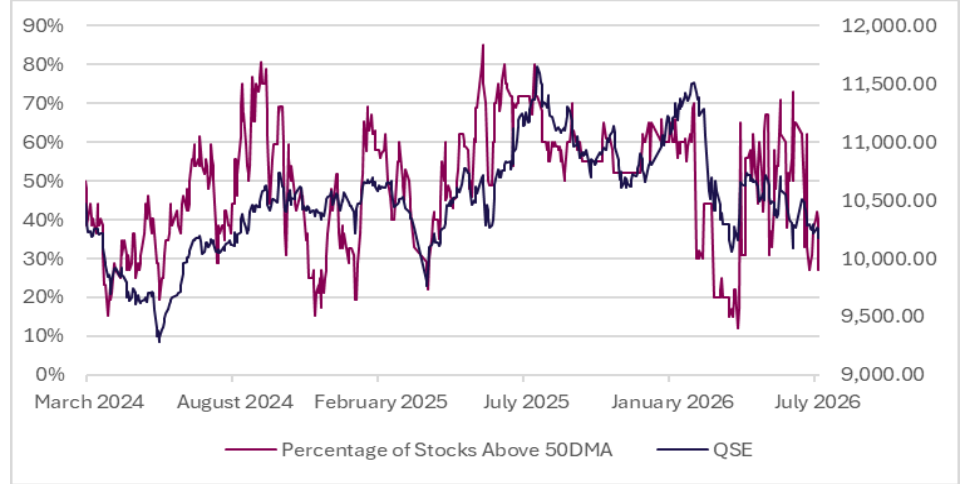
The QE Index moved lower on the back of profit-booking, after attempting a rebound in the past two months. Moreover, the Index breached below its important support of its 100-MWA currently near 10,570, indicating caution. However, the Index managed to stay above its 200-MWA currently near 10,090 and the lower end of the channel trendline, keeping its bounce back hopes alive. Meanwhile, acceptance above its 100-MWA, is required to test 10,760. On the downside, breach below its 200-MWA, can pull it down to test 9,800.

**Advance/Decline Line**



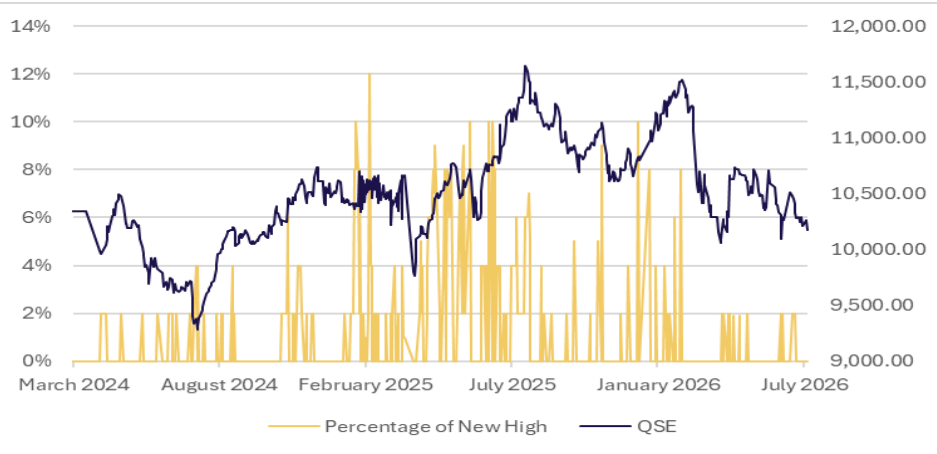
Source: Refinitiv, QNBFS Research

**Percentage of Stocks Above 50-day Moving Average**



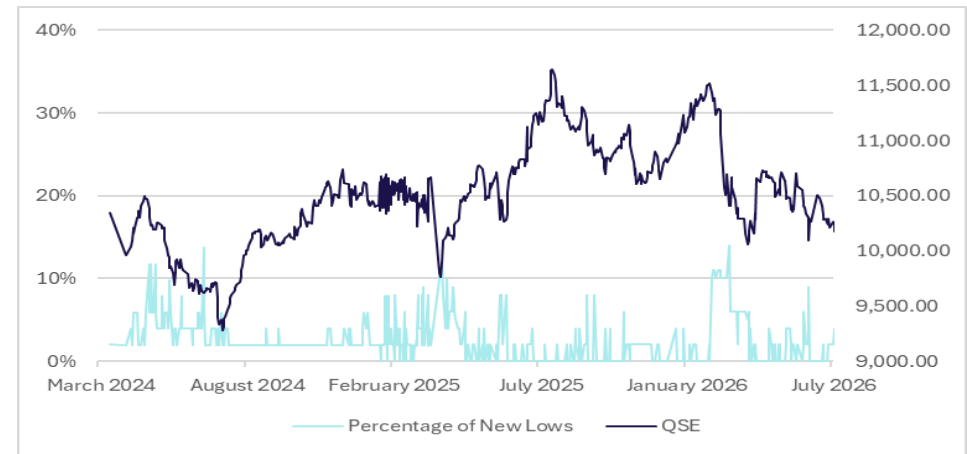
Source: Refinitiv, QNBFS Research

**Percentage of New Highs to Total Market**



Source: Refinitiv, QNBFS Research

**Percentage of New Lows to Total Market**



Source: Refinitiv, QNBFS Research

### Daily Company Recommendations

#### QFLS (Qatar Fuel)



QFLS after correcting over the past few days developed a bullish engulfing candle at the mid-bollinger band, indicating signs of a possible break above the consolidation range. The RSI line is above the 50 zone. Traders can initiate buy positions only above QR14.11, for a target of QR14.19, with a stop loss at QR14.00.

Source: Bloomberg, QNBFS Research

#### QNNS (Qatar Navigation)



QNNS has been sliding lower over the past few days, however, rebounded from the horizontal support of the trendline, showing signs of a likely pullback on the upside. The RSI is moving up towards the 50 zone. Traders can initiate buy above QR10.17, for a target of QR10.22, with a stop loss QR10.09.

Source: Bloomberg, QNBFS Research

**Weekly Company Recommendations**

**IGRD (Estithmar Holding)**



On the weekly charts, IGRD failed to cross above QR4.470 as mentioned in our report, so the trade is not executed.

Source: Bloomberg, QNBFS Research

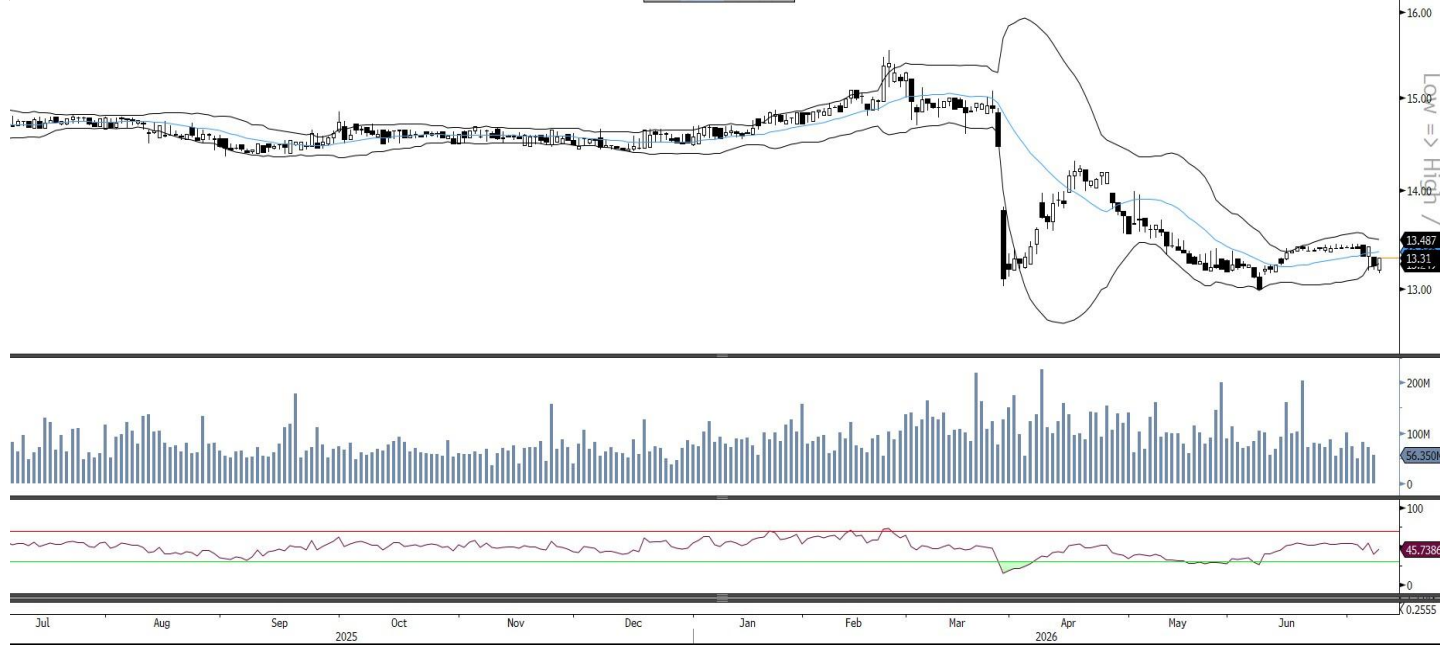
**QGRI (General Insurance)**



On the monthly charts, QGRI has been moving in the rising channel trendline zone over the past few months and is on the verge of a breakout. The stock has been consolidating in a range and now seems ready for a possible higher move. The RSI line supports this bullish sentiment. Investors can consider buying the stock only above QR1.880 for a breakout confirmation, with a stop loss of QR1.460, for a potential target of QR2.227.

Source: Bloomberg, QNBFS Research

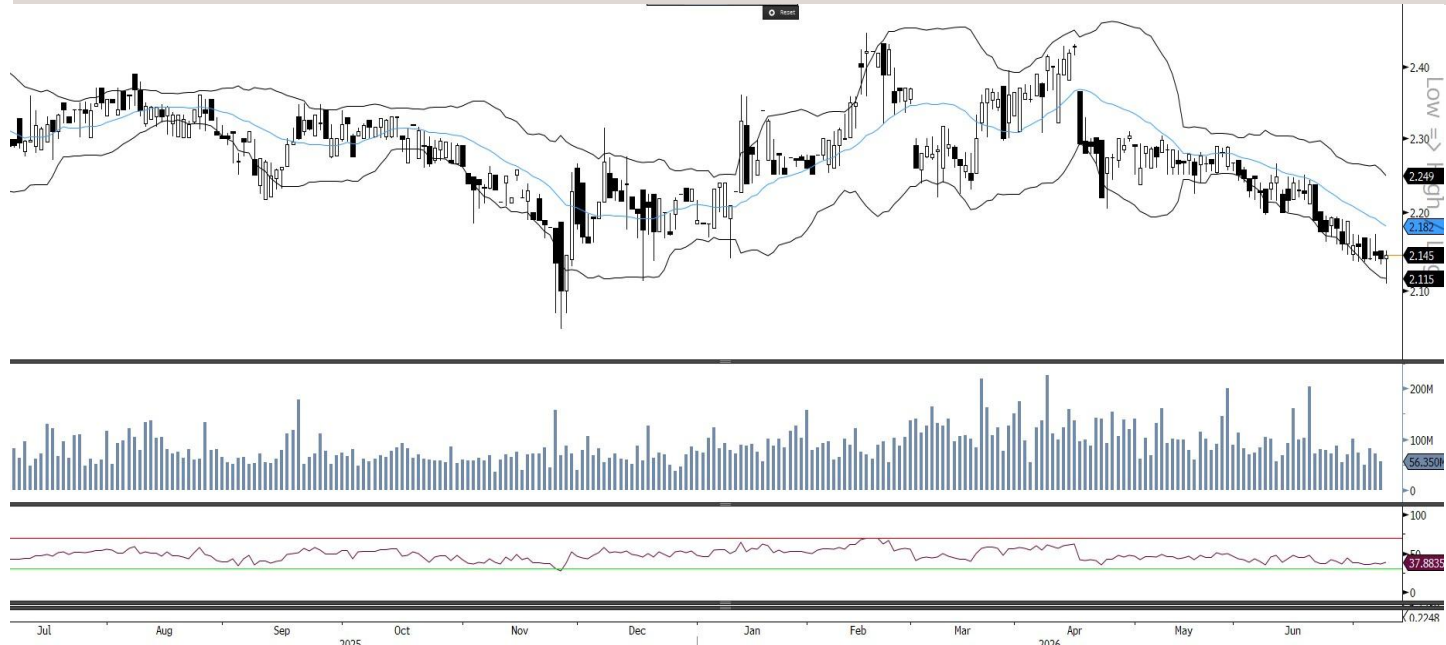
**MERS (Al Meera) - Short Term**



MERS after a correction, bounced back near the lower end of the bollinger band and developed a bullish reversal candle, indicating signs of a likely upside. Traders can initiate buy only above QR13.34, for a target of QR13.42, with a stop loss at QR13.22.

Source: Bloomberg, QNBFS Research

**MHAR (Al Mahhar)- Medium Term**



MHAR after correcting over the past few days developed a reversal hammer candle, indicating a possible pullback on the upside, however, confirmation is required. Traders can initiate buy positions only above QR2.155, for a target of QR2.170, with a stop loss at QR2.124.

Source: Bloomberg, QNBFS Research

## Contacts

**QNB Financial Services Co. W.L.L.**

Contact Center: (+974)4476 6666

[info@qnbfs.com.qa](mailto:info@qnbfs.com.qa)

Doha, Qatar

**Shahan Keushgerian**

Senior Research Analyst

[shahan.keushgerian@qnbfs.com.qa](mailto:shahan.keushgerian@qnbfs.com.qa)

**Saugata Sarkar, CFA, CAIA**

Head of Research

[saugata.sarkar@qnbfs.com.qa](mailto:saugata.sarkar@qnbfs.com.qa)

**Phibion Makuwerere, CFA**

Senior Research Analyst

[phibion.makuwerere@qnbfs.com.qa](mailto:phibion.makuwerere@qnbfs.com.qa)

**Dana Saif Al Sowaidi**

Research Analyst

[dana.alsowaidi@qnbfs.com.qa](mailto:dana.alsowaidi@qnbfs.com.qa)

Disclaimer and Copyright Notice: This publication has been prepared by QNB Financial Services Co. W.L.L. ("QNBFS") a wholly-owned subsidiary of Qatar National Bank (Q.P.S.C.). QNBFS is regulated by the Qatar Financial Markets Authority and the Qatar Exchange. Qatar National Bank (Q.P.S.C.) is regulated by the Qatar Central Bank. This publication expresses the views and opinions of QNBFS at a given time only. It is not an offer, promotion or recommendation to buy or sell securities or other investments, nor is it intended to constitute legal, tax, accounting, or financial advice. QNBFS accepts no liability whatsoever for any direct or indirect losses arising from use of this report. Any investment decision should depend on the individual circumstances of the investor and be based on specifically engaged investment advice. We therefore strongly advise potential investors to seek independent professional advice before making any investment decision. Although the information in this report has been obtained from sources that QNBFS believes to be reliable, we have not independently verified such information and it may not be accurate or complete. QNBFS does not make any representations or warranties as to the accuracy and completeness of the information it may contain, and declines any liability in that respect. For reports dealing with Technical Analysis, expressed opinions and/or recommendations may be different or contrary to the opinions/recommendations of QNBFS Fundamental Research as a result of depending solely on the historical technical data (price and volume). QNBFS reserves the right to amend the views and opinions expressed in this publication at any time. It may also express viewpoints or make investment decisions that differ significantly from, or even contradict, the views and opinions included in this report. This report may not be reproduced in whole or in part without permission from QNBFS.